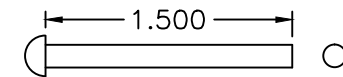
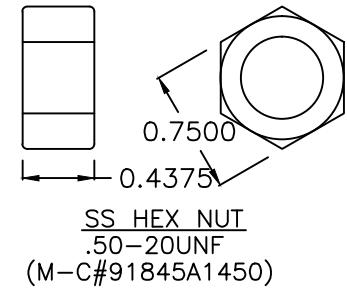
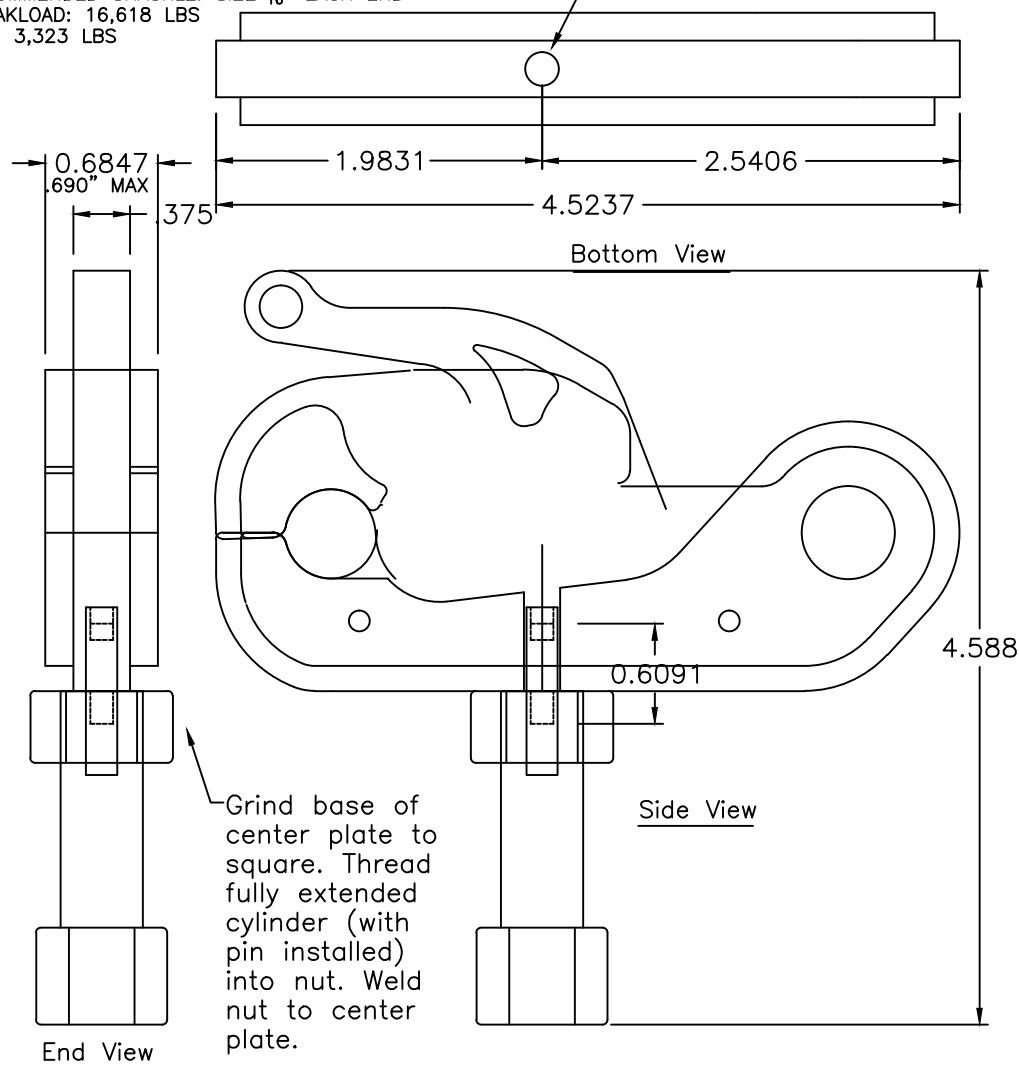


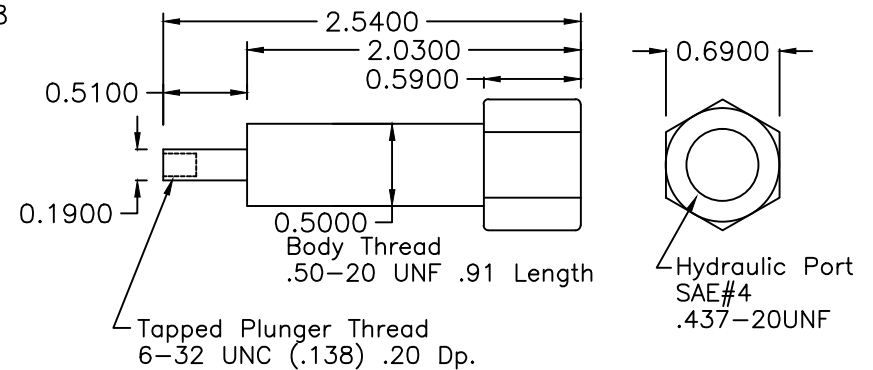
SPECS:
 MATERIAL: 15-5PH STAINLESS PLATE
 UNIT WT: 1.3 LBS
 RECOMMENDED SHACKLE: SIZE $\frac{7}{8}$ " EACH END
 BREAKLOAD: 16,618 LBS
 SWL: 3,323 LBS

DRILL $\frac{13}{64}$ " DIA HOLE THRU
 PLATE CENTER



EXTENSION PIN

6-32 x 1.5" UNC 18-8 SS Rnd.
 Hd. Philips Machine Screw
 (M-C#91773A157). Cut to length.



ENERPAC CST2131 Hydraulic Cylinder
 Thrust = 380# @ 5,000 psi
 OIL CAPACITY; .04 cu in

Sea Catch TR5RAM Assembly

McMillan
 DESIGN, INC

9816 Jacobsen Lane
 Gig Harbor, WA 98332
 Tel: 253-858-1985
 Fax: 253-858-1986

Email: jmcmillan@seacatch.com
 Website: www.seacatch.com

Sea Catch TR5RAM

SCALE: NTS

DRAWN BY JHM

DATE: 12-25-98

REVISED: 03/25/11

© 2011 JOHN McMILLAN

DRAWING NO. 032511A

CONFIDENTIAL: THIS DESCRIPTION OR DRAWING CONTAINS PROPRIETARY INFORMATION OF JOHN McMILLAN AND IS LOANED FOR USE ONLY IN EVALUATING OR BUILDING AN INVENTION OF JOHN McMILLAN AND MUST BE RETURNED UPON DEMAND. BY ACCEPTANCE HEREOF, RECIPIENT AGREES TO ALL OF THE ABOVE CONDITIONS. © 2011 JOHN McMILLAN 9816 JACOBSEN LANE, GIG HARBOR, WA 98332