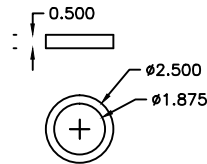
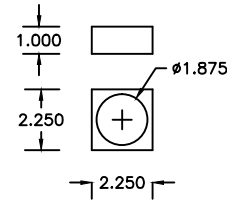


**THREADED STUD  
FOR PIN SECUREMENT**

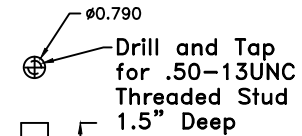
.50-13UNC x 2" 18-8 SS  
Fully Threaded Stud  
(McMaster-Carr#95412A720)



**ENERPAC JAM NUT JN-12**

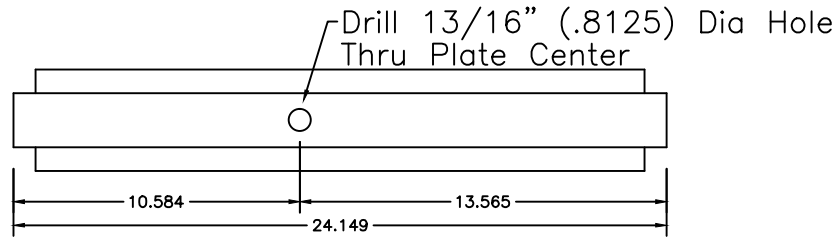


**ENERPAC Mounting Flange AW-89**

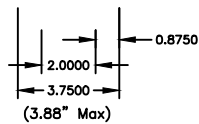


**TR17RAM PIN**

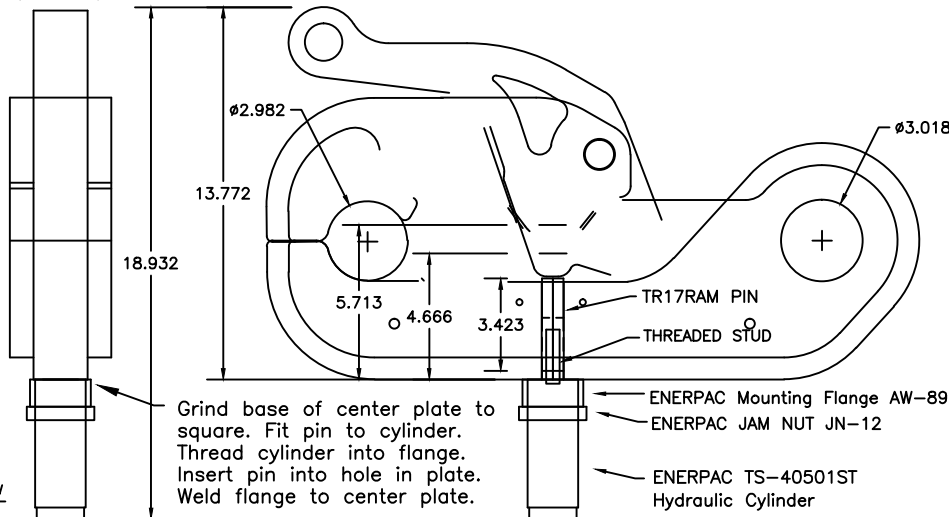
Recommended Material:  
17-4 or 15-5 Stainless Steel Rnd Stock  
Heat treated to H-900.



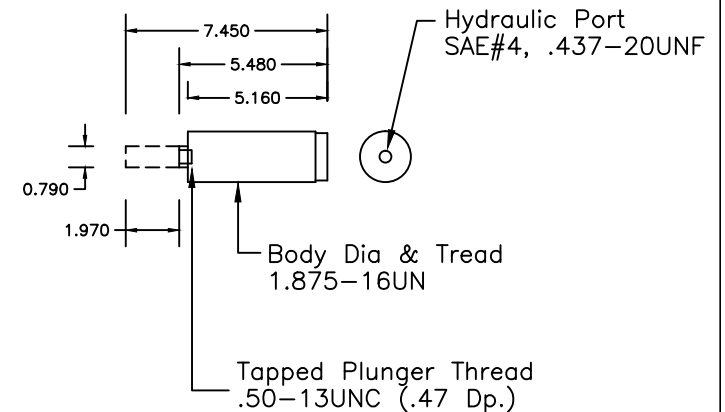
**Bottom View**



**End View**



**Sea Catch TR17RAM  
Side View**



**ENERPAC CST40501  
Single-Acting Hydraulic Cylinder**

Thrust: 8800# @ 5000 PSI  
Stroke: 1.97"  
Oil Cap: 3.49 Cubic Inches

**SPECS:**  
MATERIAL: 15-5PH STAINLESS PLATE  
UNIT WT: 200 LBS  
RECOMMENDED SHACKLE EACH END: SIZE 2-1/2"  
BREAKLOAD: 473,723 LBS  
SWL: 94,744 LBS

**Sea Catch TR17C**

**McMillan  
DESIGN, INC.**

9816 Jacobsen Lane  
Gig Harbor, WA 98332  
Tel: 253-858-1985  
Fax: 253-858-1986  
Email: jmcmillan@seacatch.com  
Website: www.seacatch.com

CONFIDENTIAL: THIS DESCRIPTION OR DRAWING CONTAINS PROPRIETARY INFORMATION OF JOHN MCMILLAN AND IS LOANED FOR USE ONLY IN EVALUATING OR BUILDING AN INVENTION OF JOHN MCMILLAN AND MUST BE RETURNED UPON DEMAND. BY ACCEPTANCE HEREOF, RECIPIENT AGREES TO ALL OF THE ABOVE CONDITIONS. © 2001 JOHN MCMILLAN 9816 JACOBSEN LANE, GIG HARBOR, WA 98332

**Sea Catch TR17RAM**

SCALE: NTS	DRAWN BY JHM
DATE:	REVISED: 06/29/01
© 2001 JOHN MCMILLAN	DRAWING NO. 111903A