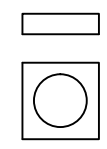


ENERPAC JAM NUT JN-48

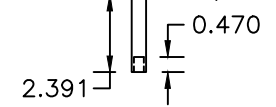
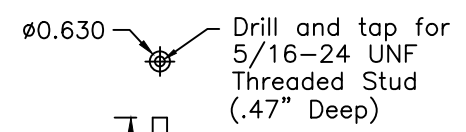


ENERPAC Mounting Flange AW-39

THREADED STUD FOR PIN SECUREMENT

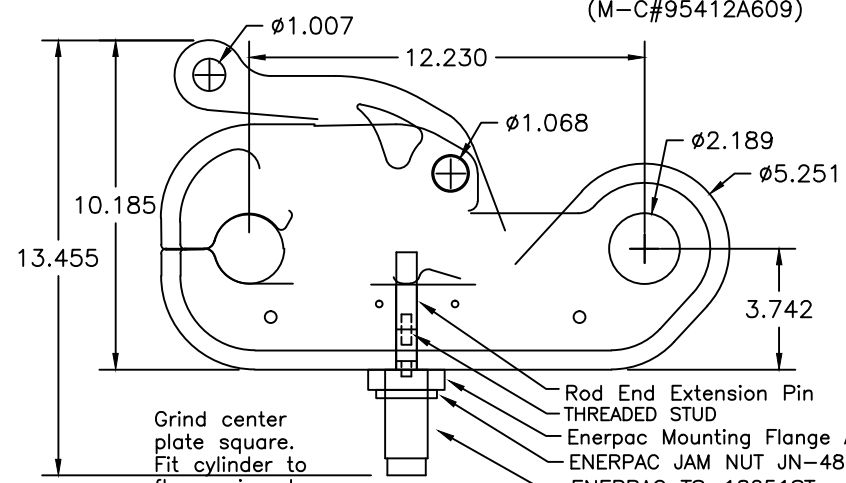
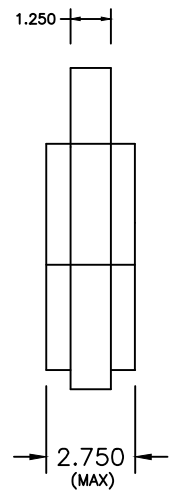
Utilize .940" cut from a 5/16-24 UNF x 2" 18-8 SS Threaded SS Stud (M-C#95412A609)

0.940

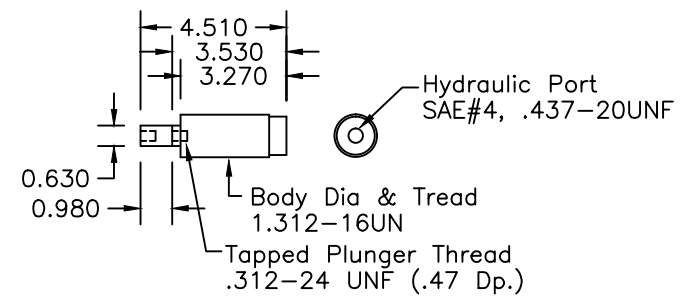


TR15RAM PIN

Recommended Material:
17-4 or 15-5 Stainless Steel Rnd Stock
Heat treated to Rockwell 45-48 range



Grind center plate square. Fit cylinder to flange, insert into hole and temp weld flange to plate.



ENERPAC CST18251 Hydraulic Cylinder

Thrust: 3950# @ 5000 PSI
OIL CAPACITY: .76 cu in

SPECS:
MATERIAL: 15-5PH STAINLESS PLATE
UNIT WT: 75 LBS
RECOMMENDED SHACKLE EACH END: SIZE 1-3/4"
BREAKLOAD: 125.5 TONS
SWL: 25.1 TONS

Material: 15-5 PH Stainless Plate in 1-1/4" and 5/8" nominal thickness. No grinding req'd. Unit weight: 70 lbs.

Associated DWGs:
TR15C-1.dwg - 1-1/4" plate
TR15C-2.dwg - 5/8" plate

McMillan DESIGN, INC.

9816 Jacobsen Lane
Gig Harbor, WA 98332
Tel: 253-858-1985
Fax: 253-858-1986
Email: seacatch7@cs.com
Website: www.seacatch.com

TR15RAM

TR15_Rev_C

SCALE: NTS	DRAWN BY JHM
REVISED: 05/9/03	
© 2004 JOHN McMILLAN	DRAWING NO. 031604A

CONFIDENTIAL: THIS DESCRIPTION OR DRAWING CONTAINS PROPRIETARY INFORMATION OF JOHN MCMILLAN AND IS LOANED FOR USE ONLY IN EVALUATING OR BUILDING AN INVENTION OF JOHN MCMILLAN AND MUST BE RETURNED UPON DEMAND. BY ACCEPTANCE HEREOF, RECIPIENT AGREES TO ALL OF THE ABOVE CONDITIONS. © 2004 JOHN MCMILLAN 9816 JACOBSEN LANE, GIG HARBOR, WA 98332