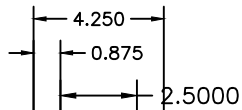
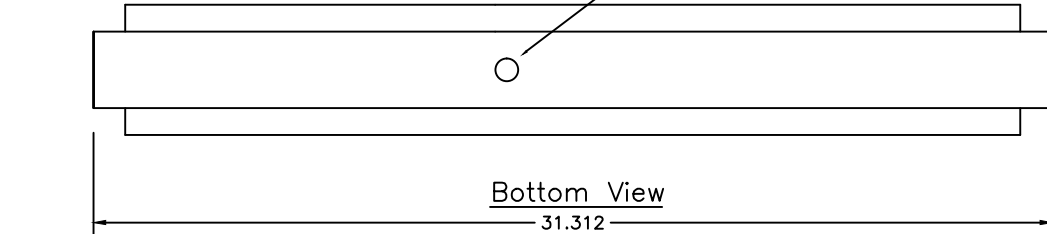


DRILL  $\frac{13}{16}$ " DIA HOLE THRU CENTER PLATE PRIOR TO PLATE WELDING  
 CENTER OF HOLE IS TO BE LOCATED AT THE CENTER OF THE FLAT  
 SURFACE ON THE SPUR AT A FULLY LOCKED LEVER.

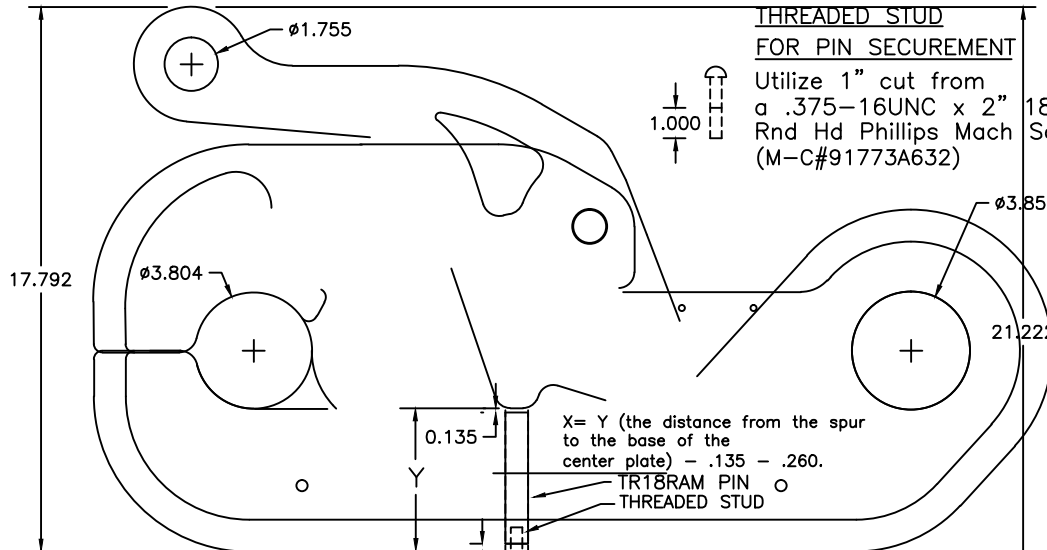
(4.75 Max)



End View



Bottom View

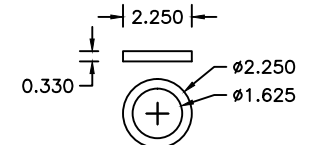


Side View

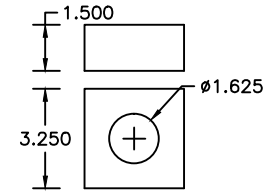
Grind base of center plate to square. Fit pin to cylinder. Thread cylinder into flange. Insert pin into hole in plate. Weld flange to center plate.

**THREADED STUD FOR PIN SECUREMENT**

Utilize 1" cut from a .375-16UNC x 2" Rnd Hd Phillips Mach (M-C#91773A632)



ENERPAC JAM NUT JN-11



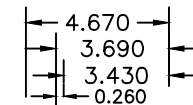
ENERPAC Mounting Flange MF-421

Drill and tap for .375-16UNC Threaded Stud (.53" Deep)

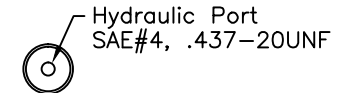


TR18RAM PIN

Recommended Material:  
 17-4 or 15-5 Stainless Steel Rnd Stock  
 Heat treated to Rockwell 45-48 range



0.710  
 0.980 Stroke



Body Dia & Tread 1.625-16UN  
 Tapped Plunger Thread .375-16UNC (.47 Dp.)

ENERPAC CST-27251\* Hydraulic Cylinder  
 Thrust: 6050# @ 5000 PSI (MAX)  
 OIL CAPACITY: 1.20 CU IN

\*Replaced TS-25251ST

**SPECS:**  
 MATERIAL: 15-5PH STAINLESS PLATE  
 UNIT WT: 360 LBS  
 RECOMMENDED SHACKLE EACH END: SIZE 3"  
 BREAKLOAD: 771,183 LBS  
 SWL: 154,236 LBS

Sea Catch TR18RAM Rev D

Sea Catch TR18RAM

**McMillan**  
 DESIGN, INC

9816 Jacobsen Lane  
 Gig Harbor, WA 98332 USA  
 Tel (253) 858-1985  
 Fax (253) 858-1986  
 Email: jmcmillan@seacatch.com

CONFIDENTIAL: THIS DESCRIPTION OR DRAWING CONTAINS PROPRIETARY INFORMATION OF JOHN MCMILLAN AND IS LOANED FOR USE ONLY IN EVALUATING AN INVENTION OF JOHN MCMILLAN AND MUST BE RETURNED UPON DEMAND. BY ACCEPTANCE HEREOF, RECIPIENT AGREES TO ALL OF THE ABOVE CONDITIONS. © 2012 JOHN MCMILLAN 9816 JACOBSEN LANE, GIG HARBOR, WA 98332

Sea Catch TR18RAM Rev D

SCALE: NTS	DRAWN BY JHM
DATE: 8-18-98	REVISED: 09-26-12
© 2012 JOHN MCMILLAN	DRAWING NO. 092612A