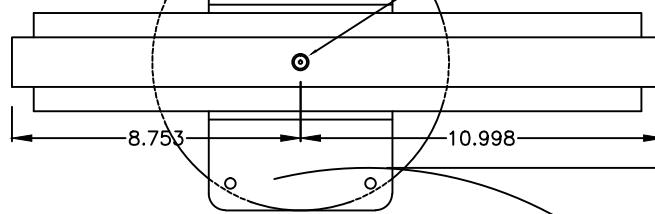
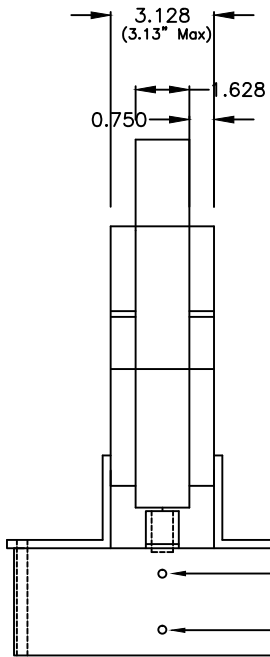


Drill 4 holes 5/16" dia  
 3"x3"x1/4" SS Angle  
 cut 5.5" length, weld to body  
 Thru Hole .5" Dia thru plate center.  
 Drill prior to welding of plates.

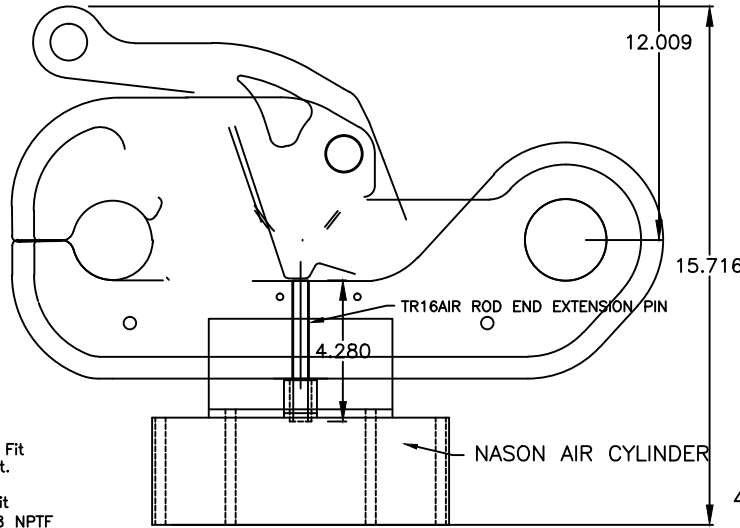


Bottom View

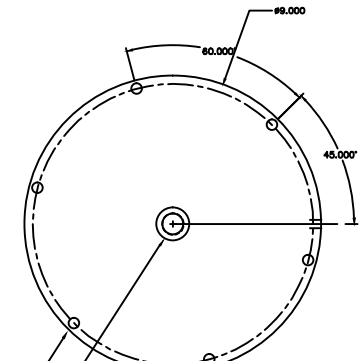


End View

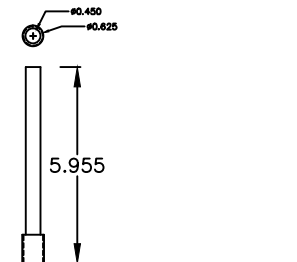
Outlet Port: Fit with air vent.  
 Inlet Port: Fit with 1/4-18 NPTF air fitting with preferred hose connection.



Sea Catch TR16AIR Side View

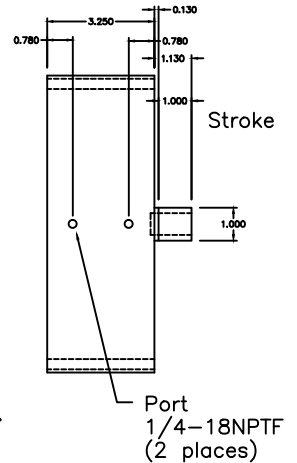


Rod End  
 5/8-18 Tap x 1.25 Dp.  
 w/ 15/16 Wrench flats  
 Mounting Hole  
 5/16 located on a 8.5 Dia BC (6 places)



Rod End Extension Pin

5/16 x 6-1/8" Long Arm Hex  
 L-Key M-C#7122A51 cut to length  
 5/8-18 x 7/8" Set Screw M-C#91375A813



Port  
 1/4-18NPTF  
 (2 places)

SPECS:  
 MATERIAL: 15-5PH STAINLESS PLATE  
 UNIT WT: 108 LBS.  
 RECOMMENDED SHACKLE: SIZE 2'  
 BREAKLOAD: 158.54 TONS  
 SWL: 31.69 TONS

NASON Air Cylinder P/N CS-80x100MT-4N (or special CS-102191)  
 Thrust: 5030 lbs @ 100 PSI  
 Stroke: 1 inch  
 Air Volume: 50 cu in @ 150 psi

Mounting Bolts: 4 @ 5/16"-18 x 4" SS Hex Hd Cap Screw M-C#92198A699  
 Nuts: 4 @ 5/16"-18 SS Hex Nylon Insert Locknuts M-C#91831A030

CONFIDENTIAL: THIS DESCRIPTION OR DRAWING CONTAINS PROPRIETARY INFORMATION OF JOHN MCMILLAN AND IS LOANED FOR USE ONLY IN EVALUATING OR BUILDING AN INVENTION OF JOHN MCMILLAN AND MUST BE RETURNED UPON DEMAND. BY ACCEPTANCE HEREOF, RECIPIENT AGREES TO ALL OF THE ABOVE CONDITIONS. © 2012 JOHN MCMILLAN 9816 JACOBSEN LANE, GIG HARBOR, WA 98332

**McMillan**  
**DESIGN, INC.**  
 9816 Jacobsen Lane  
 Gig Harbor, WA 98332  
 Tel: 253-858-1985  
 Fax: 253-858-1986  
 Email: jmcmillan@seacatch.com

# Sea Catch TR16AIR

SCALE: NTS DRAWN BY JHM  
 DATE: 03-31-99 REVISED: 02-12-10  
 © 2012 JOHN MCMILLAN DRAWING NO. 111400A