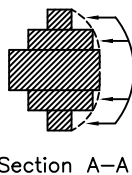


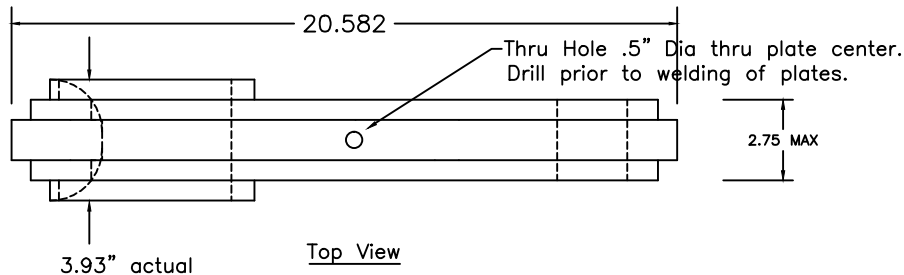
Associated DXFs:

TR15DM-1.dxf - 1-1/4" plate

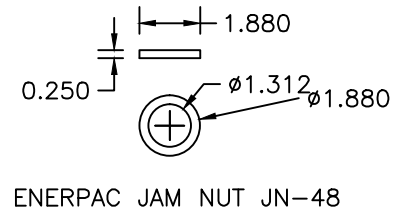
TR15DM-2.dxf - 5/8" plate



Fill-in welding to Radius 1.61"

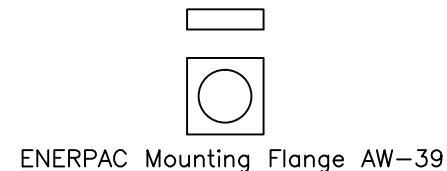


Top View

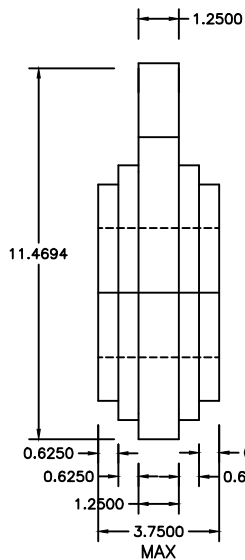


ENERPAC JAM NUT JN-48

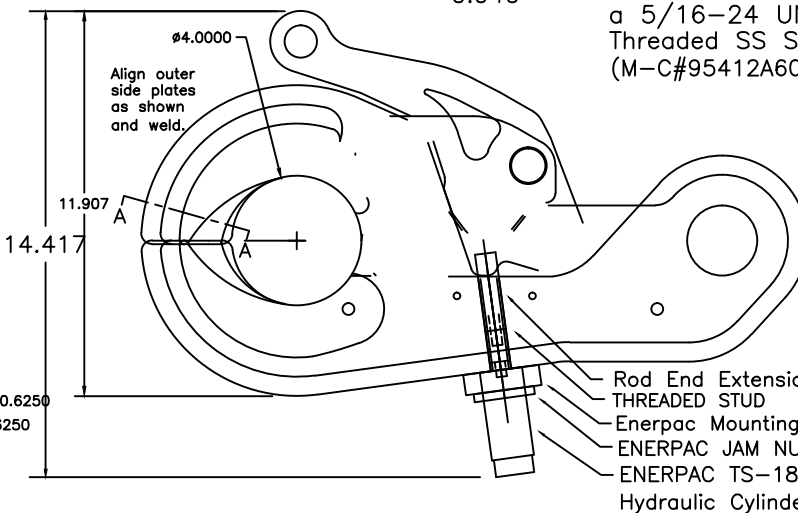
THREADED STUD FOR PIN SECUREMENT
Utilize .940" cut from a 5/16-24 UNF x 2" 18-8 SS Threaded SS Stud (M-C#95412A609)



ENERPAC Mounting Flange AW-39

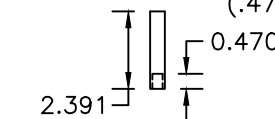


TR15DMRAM Front End View



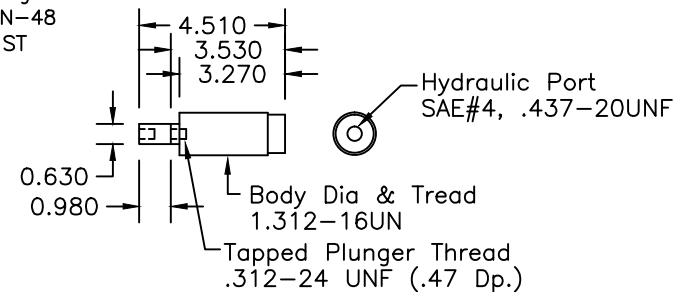
TR15DMRAM Side View

Drill and tap for 5/16-24 UNF Threaded Stud (.47" Deep)



TR15RAM PIN

Recommended Material:
17-4 or 15-5 Stainless Steel Rnd Stock
Heat treated to Rockwell 45-48 range



ENERPAC TS-18251ST Hydraulic Cylinder

Thrust: 3950# @ 5000 PSI
OIL CAPACITY: .76 cu in

SPECS:
MATERIAL: 15-5PH STAINLESS PLATE
UNIT WT: 85 LBS
RECOMMENDED SHACKLE (REAR END): SIZE 1-3/4"
OPEN JAW OPENING: 3.3"
BREAKLOAD: 125.5 TONS
SWL: 25.1 TONS

Material: 15-5 PH
Stainless Plate in
1-1/4" and 5/8"
nominal thickness.
No grinding req'd.

McMillan DESIGN, INC.

9816 Jacobsen Lane
Gig Harbor, WA 98332
Tel: 253-858-1985
Fax: 253-858-1986
Email: jmcmillan@seacatch.com
Website: www.seacatch.com

TR15DMRAM

SCALE: NTS

DRAWN BY JHM

REVISED: 04/12/02

© 2002 JOHN McMILLAN

DRAWING NO. 041202A

CONFIDENTIAL: THIS DESCRIPTION OR DRAWING CONTAINS PROPRIETARY INFORMATION OF JOHN MCMILLAN AND IS LOANED FOR USE ONLY IN EVALUATING OR BUILDING AN INVENTION OF JOHN MCMILLAN AND MUST BE RETURNED UPON DEMAND. BY ACCEPTANCE HEREOF, RECIPIENT AGREES TO ALL OF THE ABOVE CONDITIONS. © 2002 JOHN MCMILLAN 9816 JACOBSEN LANE, GIG HARBOR, WA 98332